

Oil condensing boilers

10.3 to 53,7 kW

Vitorondens 200-T

– With Vitoflame 300 blue flame oil burner

20.2 to 53.7 kW

1.1

1

Viessmann's integrated range of solutions

Digital services



ViCare



ViGuide

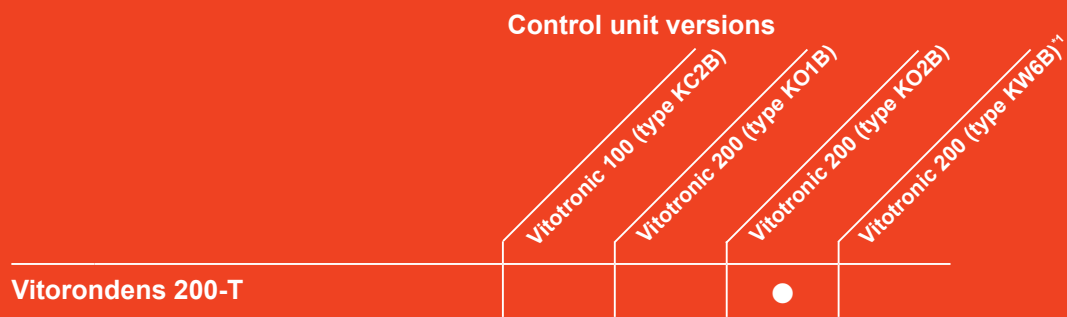
Connectivity and platforms

Vitoconnect

Products & systems

VITORONDENS 200-T

1



▶ See overleaf for control functions

Control functions	Control unit versions
For constant boiler water temperature	●
For modulating boiler water temperature	●
Weather-compensated	●
With cylinder temperature controller	●
With mixer control for one heating circuit	●*1
With mixer control for two heating circuits	●*1
With time switch with indiv. day and 7-day prog.	●
With display with plain text prompts	●
With diagnostic system	●
With separate switching times for DHW heating	●
With control for DHW circulation pump	●
With sep. switching times for DHW circ. pump	●
With control for solar control module	●
With comm. with Vitosolic solar control unit	●*1
With display of solar temperatures and operating states	●
Capable of communicating via LON bus	●*1

Vitotronic 200 (type KO1B, KO2B and KW6B)
for two heating circuits with mixer
and one heating circuit without mixer

*1 Possible with accessories.

5696864

VITORONDENS 200-T

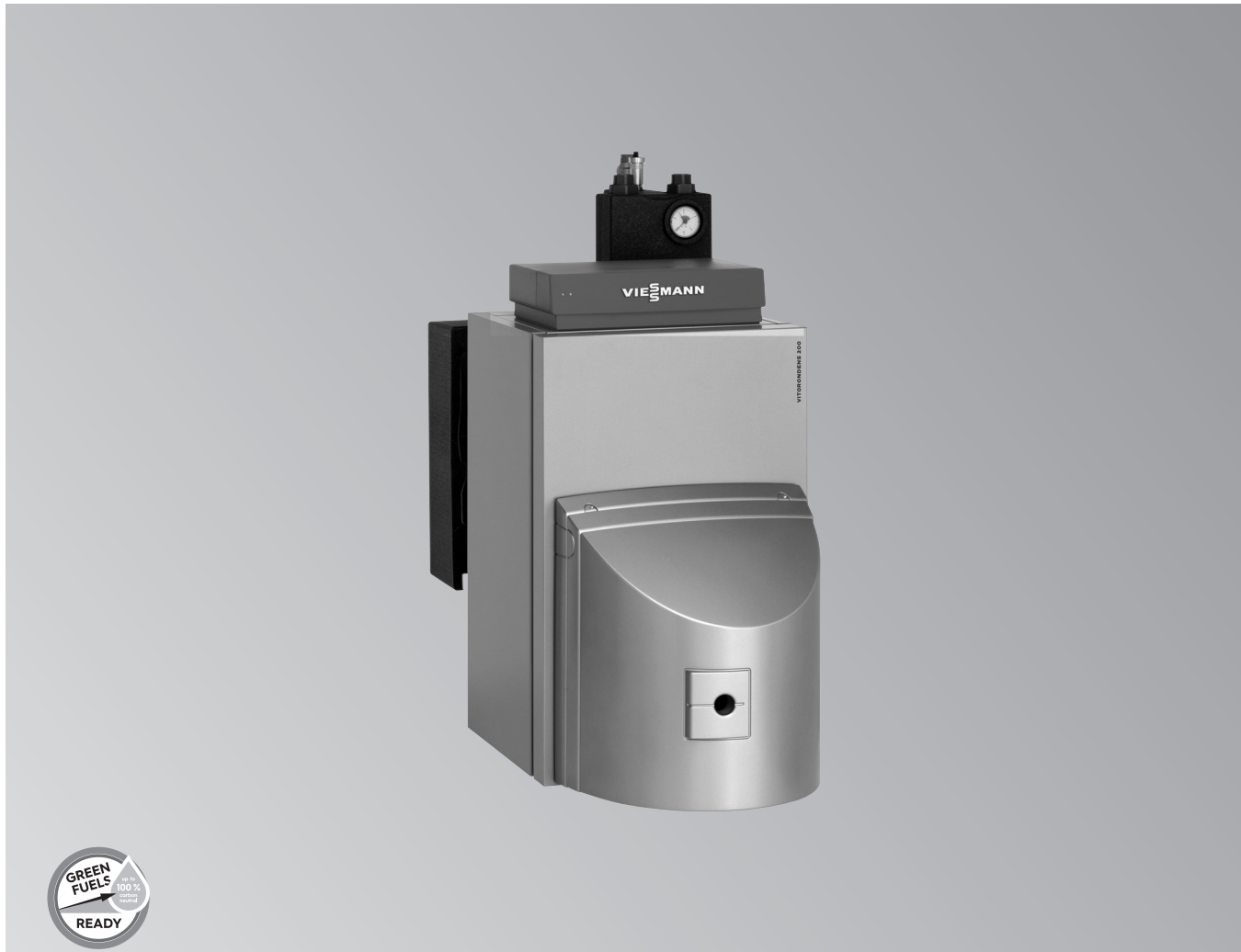
Oil condensing boilers
20.2 to 53.7 kW

10 year guarantee

on stainless steel heat exchangers for oil
or gas condensing boilers up to 150 kW



1.1



Vitorondens 200-T

Type BR2A

Oil condensing boilers

For operation with EL fuel oil to DIN 51603-1

For modulating boiler water temperature

Complete with fitted thermal insulation and
Vitotronic control unit

Permissible operating pressure 3 bar (0.3 MPa)

Product ID: CE2456CL102.3

- Seasonal central heating energy efficiency up to 94 % (H_s) [gross cv] (label A)
- Eutectoplex heating surface for high operational reliability and a long service life
- Cast sections with flexible gaskets for durable sealing on the hot gas side
- Corrosion-resistant stainless steel Inox-Radial heat exchanger
- JetFlow system for optimum heating water distribution
- Flexible siting with choice of open flue or room sealed operation
- Easy to operate Vitotronic control unit with plain text and graphic display
- All commercially available low sulphur EL fuel oils can be used. Also for fuel oil DIN SPEC 51603-6-EL A Bio 20: Low sulphur EL fuel oil with blends of up to 20 % bio-components (FAME) and paraffinic fuel oils (e.g. HVO or PTL) to DIN TS 51603-8 in proportions of up to 100 %
- Quiet operation thanks to external silencer
- Web-enabled through Vitoconnect (accessories) for operation and service via Viessmann apps

8/2023

5812277

VISSMANN

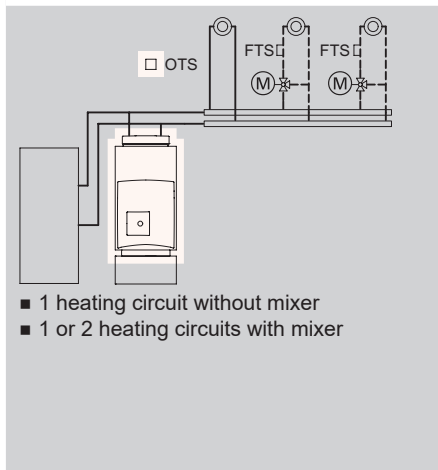
1.1-1

VITORONDENS 200-T

Oil condensing boiler
for open flue or room sealed operation


1.1

Heating system



Control unit

Vitotronic 200
Type KO2B, for weather-compensated operation



With control unit for one heating circuit without mixer and two heating circuits with mixer

- Weather-compensated, digital boiler and heating circuit control unit
- With digital time switch with individual day and seven-day program
- With separately adjustable time periods, heating curves, set temperatures and heating programs
- With cylinder temperature controller and sensor
- With integral diagnostic system and additional functions

An extension is required for each **heating circuit with mixer**:

Mixer extension kit (mixer mounting)
Part no. ZK02940 Euro 652,- MG W

Mixer extension kit (wall mounting)
Part no. ZK02941 Euro 428,- MG W

Standard delivery:

- Boiler body with fitted thermal insulation and Vitotronic 200 control unit
- Stainless steel oil condensing heat exchanger
- Fully wired
- Single-stage Vitoflame 300 blue flame oil burner for open flue operation or with accessories (boiler flue connection and inlet adaptor) for room sealed operation
- Flue gas silencer

► For flue gas and ventilation air systems, see Register 4.

VITORONDENS 200-T

Oil condensing boilers
for open flue or room sealed operation

1.1

Burner versions Burner name Flue gas/ventilation air type	Rated heating output (kW) at heating water temperature 50/30 °C or 80/60 °C						MG WE
	20.2 18.8	24.6 22.9	28.6 27.0	35.4 33.0	42.8 40.0	53.7 50.0	
Blue flame oil burner Vitoflame 300 Open flue	BR2A019 6.358,- ⊿ A	BR2A020 6.358,- ⊿ A	BR2A021 6.479,- ⊿ A	BR2A022 6.489,- ⊿ A	BR2A023 7.402,- ⊿ A	BR2A024 7.402,- ⊿ A	Part no. Euro Energy
Blue flame oil burner Vitoflame 300 Coaxial room sealed Vertical	BR2A025 6.591,- ⊿ A	BR2A026 6.591,- ⊿ A	BR2A027 6.712,- ⊿ A	BR2A028 6.722,- ⊿ A	BR2A029 7.589,- ⊿ A	BR2A030 7.589,- ⊿ A	Part no. Euro Energy
Blue flame oil burner Vitoflame 300 Coaxial room sealed Horizontal	BR2A210 6.636,- ⊿ A	BR2A211 6.636,- ⊿ A	BR2A212 6.757,- ⊿ A	BR2A213 6.767,- ⊿ A	-	-	Part no. Euro Energy

Specification							
Length	1226	1226	1362	1362	1662	1662	mm
Width	500	500	500	500	500	500	mm
Height	940	940	940	940	940	940	mm
Weight	147	147	184	184	224	224	kg
Flue gas connection	80	80	80	80	110	110	Ø mm

Notes:

When using a DHW cylinder below the boiler, the overall installed height can be reduced by ordering the boiler with horizontal, coaxial, balanced flue system.

5812277

VITORONDENS 200-T

DHW cylinder

1.1

Accessories

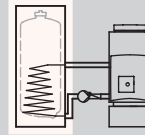
Vitocell 100-V

Vitocell 100-V, type CVAA

DHW cylinder

- 160 litre capacity
- Steel with Ceraprotect enamel coating
- Standard thermal insulation
- Colour: Vitosilver

Order system connection separately.



Z018463

1.105,-



MG WH

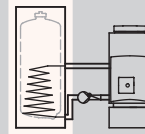
Part no.
Euro
Energy

Vitocell 100-V, type CVAB-A

DHW cylinder

- 160 litre capacity
- Steel with Ceraprotect enamel coating
- **Highly efficient thermal insulation**
- Colour: Vitosilver

Order system connection separately.



Z018465

1.243,-



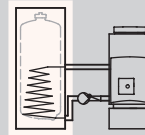
Part no.
Euro
Energy

Vitocell 100-V, type CVAA

DHW cylinder

- 200 litre capacity
- Steel with Ceraprotect enamel coating
- Standard thermal insulation
- Colour: Vitosilver

Order system connection separately.



Z018467

1.142,-



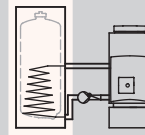
Part no.
Euro
Energy

Vitocell 100-V, type CVAB-A

DHW cylinder

- 200 litre capacity
- Steel with Ceraprotect enamel coating
- **Highly efficient thermal insulation**
- Colour: Vitosilver

Order system connection separately.



Z018462

1.282,-



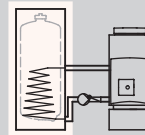
Part no.
Euro
Energy

Vitocell 100-V, type CVAB

DHW cylinder

- 300 l capacity
- Steel with Ceraprotect enamel coating
- Standard thermal insulation
- Colour: Vitosilver

Order system connection separately.



Z021911

1.464,-



Part no.
Euro
Energy

System connections (suitable for the above DHW cylinders)

System connection, installation on the right

- Connecting cables
- High efficiency circulation pump, fully wired
- Check valve

We recommend also ordering a boiler plinth.

ZK00900

694,-

MG WH

Part no.
Euro

System connection, installation on the left

- Connecting cables
- High efficiency circulation pump, fully wired
- Check valve

We recommend also ordering a boiler plinth.

ZK00901

769,-

Part no.
Euro

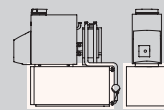
Vitocell 100-H

Vitocell 100-H, type CHA

Horizontal DHW cylinder

- 130 litre capacity
- Steel with Ceraprotect enamel coating
- Standard thermal insulation
- Colour: Vitosilver

Order system connection separately.



Z003839

1.990,-



MG WH

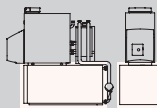
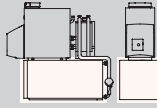
Part no.
Euro
Energy

5812277
5812277

VITORONDENS 200-T

DHW cylinder

1.1

Accessories			
Vitocell 100-H			MG WH
Vitocell 100-H, type CHA Horizontal DHW cylinder <ul style="list-style-type: none"> ■ 160 litre capacity ■ Steel with Ceraprotect enamel coating ■ Standard thermal insulation ■ Colour: Vitosilver Order system connection separately.		Z003840 2.086,- < B	Part no. Euro Energy
Vitocell 100-H, type CHA Horizontal DHW cylinder <ul style="list-style-type: none"> ■ 200 litre capacity ■ Steel with Ceraprotect enamel coating ■ Standard thermal insulation ■ Colour: Vitosilver Order system connection separately.		Z003841 2.391,- < B	Part no. Euro Energy
System connections (suitable for the above DHW cylinders)			MG WH
System connection <ul style="list-style-type: none"> ■ Connecting cables ■ High efficiency circulation pump, fully wired ■ Check valve ■ Floor plate For boilers with 20.2 and 24.6 kW rated heating output		ZK00984 818,-	Part no. Euro
System connection <ul style="list-style-type: none"> ■ Connecting cables ■ High efficiency circulation pump, fully wired ■ Check valve ■ Floor plate For boilers with 28.6 and 35.4 kW rated heating output		ZK00985 818,-	Part no. Euro
System connection <ul style="list-style-type: none"> ■ Connecting cables ■ High efficiency circulation pump, fully wired ■ Check valve ■ Floor plate For boilers with 42.8 and 53.7 kW rated heating output		ZK00986 818,-	Part no. Euro

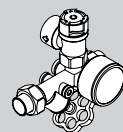
Notes:

Vitocell 100 are suitable for systems with **operating pressure up to 10 bar (1 MPa)** on the DHW side.

Notes:

When using a DHW cylinder below the boiler, the overall installed height can be reduced by ordering the boiler with horizontal, coaxial, balanced flue system.

► For the complete range of DHW cylinders, see Register 10.

Accessories			
Heat meter <ul style="list-style-type: none"> ■ Nominal flow rate 2.5 m³/h ■ Connection accessories G 1 Suitable for the following DHW cylinders: <ul style="list-style-type: none"> ■ Vitocell 100 with up to 500 l capacity ■ Vitocell 300 with up to 200 l capacity 		7172847 617,-	Part no. Euro
Safety assembly to DIN 1988 (DN 15, R 3/4) <ul style="list-style-type: none"> ■ Diaphragm safety valve 10 bar (1 MPa) ■ Shut-off valve ■ Non-return valve and test connector ■ Pressure gauge For surface mounting		7219722 251,-	Part no. Euro

5812277

VITORONDENS 200-T

DHW cylinder

1.1

Accessories

Accessories

Safety assembly to DIN 1988 (DN 20, R 3/4)

- Diaphragm safety valve 10 bar (1 MPa)
- Shut-off valve
- Non-return valve and test connector
- Pressure gauge connector

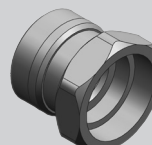


7180662
251,-

MG W

Part no.
Euro

Shut-off valve G1 1/2



7815145
56,-

Part no.
Euro

Solder fitting DN 28 (1 pce)

7515785
36,-

Part no.
Euro

Solder fitting DN 35 (2 pce)

7339921
61,-

Part no.
Euro

Threaded fitting R 1 (1 pce)

7515786
41,-

Part no.
Euro



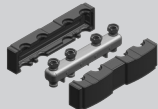
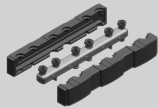
Notes:

If a DHW cylinder with no system connection is joined to a pair of connectors, fittings must be used.

VITORONDENS 200-T

Boiler accessories

1.1

Accessories					
Heating circuit					
Connection to heating circuit (nominal diameter)		DN 20 - 3/4"	DN 25 - 1"	DN 32 - 1 1/4"	MG WN
Divicon heating circuit distributor with mixer (fully fitted) <ul style="list-style-type: none"> Variable speed high efficiency circulation pump, fully wired Check valve 2 ball valves with thermometers Thermal insulation Mixer extension kit (KM-BUS subscriber) including connecting cable (3.5 m long) 					
Fully fitted Divicon heating circuit distributor <ul style="list-style-type: none"> With mixer-3 and mixer extension kit With mixer PCB and mixer motor With Wilo Para 25/6 high efficiency circulation pump 		Z024680 1.484,-	Z024681 1.514,-	-	Part no. Euro
Fully fitted Divicon heating circuit distributor <ul style="list-style-type: none"> With mixer-3 and mixer extension kit With mixer PCB and mixer motor With Wilo Para 25/8 high efficiency circulation pump 		-		Z024682 1.586,-	Part no. Euro
Divicon heating circuit distributor without mixer (fully fitted) <ul style="list-style-type: none"> Variable speed high efficiency circulation pump, fully wired Check valve 2 ball valves with thermometers Thermal insulation 					
Fully fitted Divicon heating circuit distributor Without mixer with Wilo Para 25/6 high efficiency circulation pump		Z024686 802,-	Z024687 832,-	-	Part no. Euro
Fully fitted Divicon heating circuit distributor Without mixer with Wilo Para 25/8 high efficiency circulation pump		-		Z024688 866,-	Part no. Euro
Divicon accessories					
Connection to heating circuit (nominal diameter)		DN 20 - 3/4"	DN 25 - 1"	DN 32 - 1 1/4"	MG W
Cable set (with plugs 40 and 145) To replace the connecting cable supplied in the standard delivery for linking the two mixer PCBs, in the case of 2 heating circuits with mixer		7424960 34,-			Part no. Euro
Wall mounting bracket for individual Divicons (connection between heat generator and Divicon on site)		7465894 60,-			Part no. Euro
Bypass valve For hydronic balancing of the heating circuit		7464889 21,-			Part no. Euro
Manifold for 2 Divicons <ul style="list-style-type: none"> Incl. thermal insulation Wall mounted (with wall mounting bracket to be ordered separately) 		7460638 337,-	7466337 382,-		Part no. Euro
Manifold for 3 Divicons <ul style="list-style-type: none"> Incl. thermal insulation Wall mounted (with wall mounting bracket to be ordered separately) 		7460643 464,-	7466340 529,-		Part no. Euro
Wall mounting bracket for manifold (connection between heat generator and manifold on site)		7465439 60,-			Part no. Euro

Notes:

- When sizing the Divicon heating circuit distributor, observe the technical guides.

VITORONDENS 200-T

Accessories


1.1

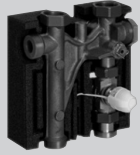

Accessories

Heating circuit			MG W
If the heating circuit or the DHW cylinder will not be connected to the boiler with Viessmann system components:			
Welded fitting DN 25 (2 pce) With union nut G 1½ and gasket		7307292 43,-	Part no. Euro
Welded fitting DN 32 (2 pce) With union nut G 1½ and gasket		7205805 43,-	Part no. Euro
Welded fitting DN 40 (2 pce) With union nut G 1½ and gasket		7515240 43,-	Part no. Euro
Threaded fitting R 1 (2 pce) With union nut G 1½ and gasket		7307293 20,-	Part no. Euro
Threaded fitting R 1¼ (2 pce) With union nut G 1½ and gasket		7205935 46,-	Part no. Euro

Heating mixers and special heating mixers for underfloor heating systems

► For versions, part numbers and prices, see Register 11.8.

Safety assembly								MG W
Rated heating output (kW)		20.2	24.6	28.6	35.4	42.8	53.7	
Safety equipment block <ul style="list-style-type: none"> ■ Safety valves in the distributor casing on the heating water side ■ Safety valve (3 bar) ■ Thermal insulation If a Divicon heating circuit distributor or a distributor for solar central heating backup is to be fitted to the boiler, the safety equipment block must also be ordered.		7248938 224,-						ZK02643 224,- Part no. Euro

Accessories							
Heating circuit							
Rated heating output (kW)	20.2	24.6	28.6	35.4	42.8	53.7	MG W
Distributor for solar central heating backup Connection assembly for straightforward installation between the boiler flue connection and Divicon heating circuit distributor. Can be mounted either on the boiler or the wall. Nominal diameter R1, can be used for nominal flow rates of up to 2.5 m³/h ■ Distributor ■ 3-way diverter valve ■ Thermal insulation ■ Sensor well for return temperature sensor The solar control module, type SM1, as well as the temperature sensors for the heating water buffer cylinder and the heating water return must be ordered separately; see "Control unit accessories".						7441163 594,-	Part no. Euro
Extension for installation on a wall ■ For direct connection of the distributor with a wall mounted Divicon heating circuit distributor ■ Incl. thermal insulation						7441445 142,-	Part no. Euro
Wall mounting bracket Required if the distributor is not fitted to a manifold.						7441165 55,-	Part no. Euro
Boilers							
Rated heating output (kW)	20.2	24.6	28.6	35.4	42.8	53.7	MG W
Plinth 250 mm high	7196529 243,-		7196530 243,-		7196531 243,-		Part no. Euro
Adjustable anti-vibration feet (4 pce)						7306246 82,-	Part no. Euro
Cleaning brush With handle						7242286 36,-	Part no. Euro
Cleaning tool For vacuum cleaner connection		7241815 67,-			7241920 75,-		Part no. Euro
Miscellaneous							
Rated heating output (kW)	20.2	24.6	28.6	35.4	42.8	53.7	
Set of cleaning brushes, mixer assembly For the mixer assembly of the Viessmann blue flame burner						ZK01791 31,-	Part no. Euro MG W
Carrying handles for floorstanding boilers ■ Vitorondens 200-T up to 54 kW (3 pce)						7189602 139,-	Part no. Euro MG N

VITORONDENS 200-T

Accessories

1.1

Accessories

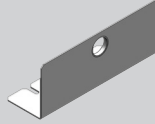
Miscellaneous

Rated heating output (kW)

20.2 24.6 28.6 35.4 42.8 53.7

Transport panel Vitorondens 200-T

- To facilitate handling the Vitorondens 200-T up to 54 kW using the transport and handling aid or a sack truck
- Screw-fitted to the thermally insulated Vitorondens 200-T.
- Not required if the Vitorondens 200-T is transported with its packaging.



7198575
139,-

Part no.
Euro
MG N

Service box

- Protective box for service folder with system documentation
- Can be fitted to the heat generator or the wall
- Colour: Vitosilver

7334502
12,60

Part no.
Euro
MG N

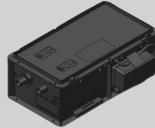
Neutralising systems

Rated heating output (kW)

20.2 24.6 28.6 35.4 42.8 53.7

Neutralising system

- For oil condensing boilers up to 55 kW
- With neutralising granulate and activated carbon filter
 - With connecting cable to link the flushing pump to the operation of the **multi stage** burner
 - With connecting hose for connection to the boiler trap
- This is obligatory when using standard EL fuel oil.



ZK00289
517,-

Part no.
Euro

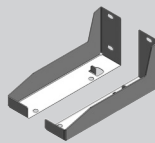
Connection hose

For connecting the neutralising system or activated carbon filter to the on-site drain

ZK01912
13,-

Part no.
Euro

Wall mounting bracket for neutralising system or activated carbon filter



7452527
163,-

Part no.
Euro



Neutralising system maintenance set

- For oil condensing boilers up to 55 kW
- Neutralising granulate
 - Activated carbon
 - Ventilation pump air filter and feet
 - Air hose
 - pH indicator sticks
 - Foil bags for disposal

7834967
126,-

Part no.
Euro

5812277
5812277

Accessories													
Filters													
Rated heating output (kW)							20.2	24.6	28.6	35.4	42.8	53.7	MG W
Activated carbon filter <ul style="list-style-type: none"> Required if no neutralising system is used. For separating oil from condensate With connecting hose for connection to the boiler trap 							ZK04726					318,-	Part no. Euro
Maintenance set for activated carbon filter <ul style="list-style-type: none"> Activated carbon Foil bags for disposal 							7834968					126,-	Part no. Euro
Condensate removal pumps													
Rated heating output (kW)							20.2	24.6	28.6	35.4	42.8	53.7	MG W
Condensate removal pump SI1830 Automatic condensate removal pump with max. 3.7 mWC <ul style="list-style-type: none"> Centrifugal pump 230 V / 75 W Condensate container 0.5 l Pressure hose 5 m Non-return valve Alarm contact: Changeover contact (floating) 250 V/4 A (ohmic load) 							ZK02487					286,-	Part no. Euro
Sensors													
Rated heating output (kW)							20.2	24.6	28.6	35.4	42.8	53.7	MG N
CO limiter with connecting lead <ul style="list-style-type: none"> For safety shutdown of the boiler if carbon monoxide escapes Can be used for boilers built from 2004 onwards With connecting lead for use with Vitoladens 300-T and Vitorondens 							Z021823					265,-	Part no. Euro
Burner													
Rated heating output (kW)							20.2	24.6	28.6	35.4	42.8	53.7	
Connecting cable <ul style="list-style-type: none"> For external fuel valve For use with multi stage Viessmann burners <i>Not required in conjunction with the neutralising system, part no. ZK00289</i> 							7148858					85,-	Part no. Euro MG W
Automatic fuel oil air vent valve, single line <ul style="list-style-type: none"> With R 3/8 oil filter With 5 µm filter element 							7549354					282,-	Part no. Euro MG VB
Fitting set, fuel oil air vent valve, connection Ø 6 mm x 3/8" For the following connections: Oil tank side, fuel oil air vent valve and fuel oil filter							7663168					6,-	Part no. Euro MG VB
Fitting set, fuel oil air vent valve, connection Ø 8 mm x 3/8" For the following connections: Oil tank side, fuel oil air vent valve and fuel oil filter							7663169					6,70	Part no. Euro MG VB

5812277

VITORONDENS 200-T

Accessories

1.1

Accessories						
Burner						
Rated heating output (kW)	20.2	24.6	28.6	35.4	42.8	53.7
Fitting set, fuel oil air vent valve, connection Ø 10 mm x 3/8" For the following connections: Oil tank side, fuel oil air vent valve and fuel oil filter	7663170 6,70					Part no. Euro MG VB
Fitting set, fuel oil air vent valve, connection Ø 12 mm x 3/8" For the following connections: Oil tank side, fuel oil air vent valve and fuel oil filter	7663171 6,70					Part no. Euro MG VB
Burner adjustment gauge Gauge to adjust the nozzles and electrode spacing.	-				ZK03049 5,-	Part no. Euro MG W

Notes:




Observe the technical guides when sizing the oil line. Correctly sized oil lines improve operational reliability.

5812277
5812277

VITORONDENS 200-T

Control unit accessories

1.1

Accessories			
Heating circuit control unit extension			MG W
<p>Mixer extension kit (mixer mounting) (KM-BUS subscriber) For one heating circuit with mixer, fully wired.</p> <ul style="list-style-type: none"> ■ Mixer PCB with mixer motor for Viessmann mixers DN 20 to 50, R ½ to 1¼ (not for flanged mixers) ■ Flow temperature sensor as contact temperature sensor (NTC 10 kOhm), with connecting lead (2.0 m long) and plug ■ Plug for heating circuit pump ■ Power cable and KM-BUS cable with plug 		ZK02940 652,- Part no. Euro	
<p>Mixer extension kit (wall mounting) (KM-BUS subscriber) For one heating circuit with mixer, fully wired.</p> <ul style="list-style-type: none"> ■ Mixer PCB for separately ordered mixer motor ■ Flow temperature sensor as contact temperature sensor (NTC 10 kOhm), with connecting lead (5.8 m long) and plug ■ Plug for heating circuit pump and mixer motor ■ Power cable and KM-BUS cable with plug 		ZK02941 428,- Part no. Euro	
Function extensions			MG W
<p>EA1 extension Function extension inside enclosure for wall mounting. Using the inputs and outputs allows up to 5 functions to be achieved:</p> <p>1 analogue input (0 to 10 V)</p> <ul style="list-style-type: none"> ■ Specification of set boiler water temperature <p>3 digital inputs</p> <ul style="list-style-type: none"> ■ External changeover of the operating status for heating circuits 1 to 3 on the weather-compensated control unit ■ External blocking ■ External blocking with central fault message ■ Minimum boiler water temperature demand. ■ Fault messages ■ Brief operation of the DHW circulation pump in systems with weather-compensated control unit <p>1 switching output (floating changeover contact)</p> <ul style="list-style-type: none"> ■ Issuing a central fault message ■ Feed pump connection to a substation 		7452091 227,- Part no. Euro	

Notes:

For further accessories and software, see the following Registers:

- ▶ Register 11, Connectivity and Home & Building Automation (ViCare app, Vitoconnect, Vitogate, etc.)
- ▶ Register 11, Control unit accessories (remote controls, sensors, etc.)

1.1